

## Unit 4: Multiple Use Path (MUP scenario)

### Learning Objectives - Students can:

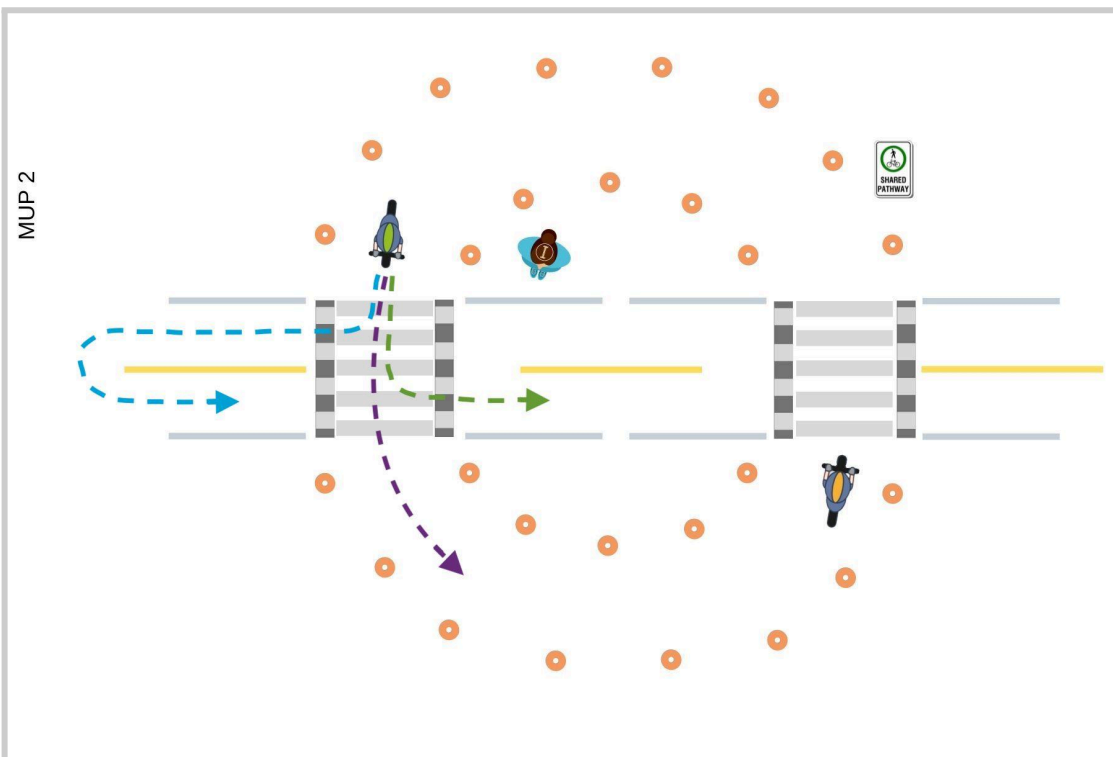
1. Demonstrate awareness of, and respect for, other path users on multi-use paths.
2. Use the bicycle's brakes for control and to stop.
3. Build awareness for Right of Way ie, pedestrians have the right of way before cyclists
4. Communicate with voice and bell when passing pedestrians

**Set Up:** Arrange cones to create a large continuous loop, and bisect with rubber lines to create an intersecting road with crosswalks/ bikes at the intersections. ***If your community uses Elephants Feet at crosswalks, add them; if not, exclude them from this scenario.***

**Set Up Time:** 15 minutes. Set this up BEFORE students come out for their bikes

**Starting Positions:** Introduce the station while students are outside of it.

**Station Diagram:**



## Everyone Rides Teacher-Led On-Bike Curriculum

**Delivery:** Introduce the Multiple Use Path station, then have students travel the paths as you periodically pause the flow to introduce new complexities.

### 1. Introduction

- What does this ‘Shared Pathway’ sign mean? Who are you likely to see on this path? Can you see where the path ends on the road? (Help students visualize the scene by describing which lines/cones represent the path, road, and crosswalks)
- If using Elephants Feet, ask: Have you seen this before? What does it mean?
- Answer: They allow you to ride across, but only after yielding to other traffic, checking if it is safe to cross.

### 2. Demonstrate:

- Travel around the circular path, and stop before proceeding through each intersection.
- *Activity:* Travel the path together. Listen for communication about passing.

### 3. Passing on the Path:

- *Introduction:* Discuss using a bell or your voice (“Passing on your left!”) to politely communicate anytime you’re passing a pedestrian.
- *Activity:* Have students continue to circle the path, this time warning any pedestrians anytime they are about to pass.

### 4. Travel on the path & road

- *Introduction:* Discuss who would get to go first if a path-user and road-user arrived at the intersection at the same time. The road user should stop and wait for the path user to cross first.
- *Activity:* Ask a couple of volunteers to travel back and forth along the road. Check that these right-of-way rules are being followed.
- **Level down:** Students may choose to act as pedestrians on the pathway or pretend to be cars/motorcycles on the road.
- **Level up:** Have students travel the pathway in both directions; Allow bikes to signal and turn from the path to the road and vice-versa; Pretend to be an emergency vehicle that everyone must pull over/yield to.

### Station Rotation!

# Everyone Rides Teacher-Led On-Bike Curriculum



**Use trees or playground apparatus to wrap the cones around to simulate a Multi use paths.**



**“Elephant feet” are used in some communities.**

*It means you can ride your bike across the crosswalk.*

*If your neighbourhood has one, please use them. If not, consider not discussing them.*

