

DRAFT MINUTES - Delta HUB Committee Meeting

Thursday, April 6th, 2017, 7:00pm

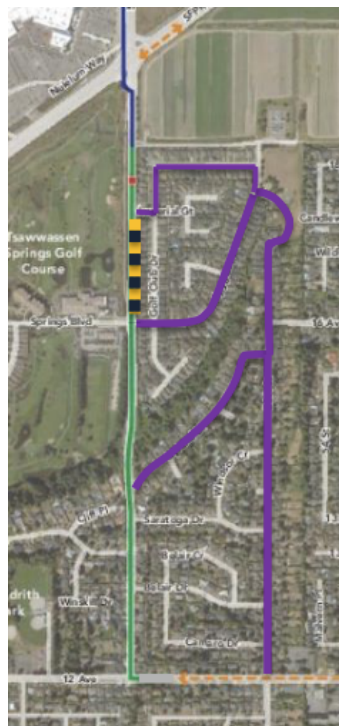
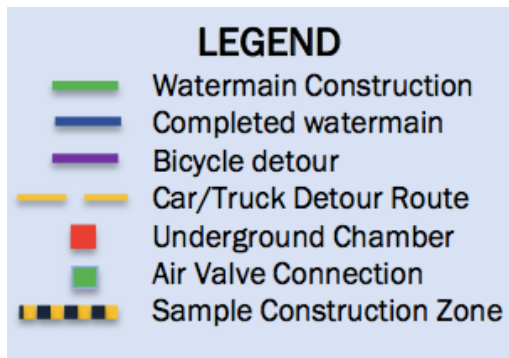
1. INTRODUCTIONS

Patrick (Chair), Steve, Neil, Carol, Barbara, Hilary, Sandra, Bill, John, Paul, Melanie, Anton, Roel.

2. **MINUTES:** Minutes from March 2nd meeting were approved.

3. **GUEST SPEAKER:** Steve Billington, Metro Vancouver (South Delta Watermain Project)

- Steve is a community liaison with Metro Vancouver. He provided an overview of the new watermain project that will be built along 52 St, from Highway 17 to 12 Ave. This is the continuation of the project that has closed 52 St, from Fisherman's Way north to 28 Ave.
- This next phase will occur from April through the summer, and involve a major road closure for cyclists and motorists at different intervals along 52 St. (closures are required in part due to the size of the pipe, and the requirements for storage along the route).



- **Cyclist detours in purple**
During the construction period, cyclists will be encouraged to use the Imperial Village connection to get up/down the hill in Tsawwassen, via 53A St.
- This presents an opportunity for Delta HUB to suggest some improvements along 53A, to encourage the evolution of a more cycle-friendly "spine" for north-south travel (i.e. away from the traffic of 52 or 56 St). It may also be a chance to approach Metro Vancouver for support with signage or related improvements, which could become more permanent.
- Since construction zones move, and traffic flow will change, communication will be key:
 - o Work will begin at Springs Blvd and 52 St intersection;
 - o In May, they will move north up the hill towards 12th Ave;
 - o Later in the summer the points north of Spyglass to Hwy 17 will be connected.
- While vehicle traffic will be pushed to 12 Ave and 56 St, one northbound lane of 52 St will be open overnight (10pm-9am) and all-day Sundays. This will allow some vehicular flow northbound 52nd during the early-morning peak period.

- Area traffic signals will also be coordinated to encourage better flow (i.e. 12 Ave at 56 St.). Presently, 56th St has ~1100 vehicles/hr., while 52nd St has ~300/hr.
- Excavators may create a safety hazard and sidewalks will be closed during some phases.
- In addition, there will be temporary sections of milled asphalt (i.e. uneven grooves on the road, prior to paving); this may pose a hazard to cyclists, and will be marked as a hazard.
- Delta will be doing extensive repaving when the improvements are complete (~October); in the interim, there may be spots where caution will be required (for instance, asphalt ‘lip’ at intersections where contractor leaves a base for bevelling/final paving).



- During the repaving, enhancements will be made to 52 St by the Corporation of Delta, including bike lanes along both sides of 52, between Spyglass and 12th Ave:



- **Action:** To provide input to Delta on cycling improvements to 53A St in Tsawwassen, an informal road assessment/ride will be organized. Please contact Patrick if you are interested in participating, or if you have any suggestions for improvements to 53A.

Other discussion items for future engagement with Metro Vancouver:

- Metro Vancouver has jurisdiction over certain area parks (including Deas Island and the Boundary Bay Dyke Trail). Steve indicated that he can assist us with connecting to Metro Vancouver Parks contacts relating to identified HUB priorities, including:
 - **Trail enhancement** (Boundary Bay Dyke Trail, Tsawwassen)
 - With Delta HUB Priority Item #15 (proposed paving/surface treatment to Boundary Bay dyke, from 17A Ave entrance to 64 St), the idea is to encourage all ages access to network routes. Since 64 St is becoming an important local/regional spine for safe

cycling (particularly with the Massey Bridge Replacement), a paved surface in this section would open up commuter and recreational opportunities for many cyclists.

- As a first step – in advance of engaging Metro Vancouver – it was suggested that Delta HUB connect with the Delta Farmers Institute (DFI) to see if they might provide a letter of support. Cllr Heather King noted that, since this is primarily a farm access road - and farm vehicles have priority – affected farmers will need to support the initiative.
- Delta HUB will need to build support with other key stakeholders as well (i.e. horse riders), and identify ways to mitigate or resolve concerns.
- For instance, it would be helpful to find trail examples where paved sections are complemented by a parallel gravel path, to accommodate the interests of horse riders.
- It was suggested that Delta HUB look into different trails on Vancouver Island (including the Galloping Goose/Lochside Trail), where they have successfully accommodated multiple users. The Valley Trail in Whistler and Maple Abernathy connector in Maple Ridge were also cited as constructive examples.
- **Action:** Patrick will connect with DFI for a preliminary discussion of the surface treatment. Delta HUB will create a brief inventory of trails that successfully accommodate multiple users (involving paved and soft/gravel surfaces).

→ Trail Wayfinding/Signage

- Delta HUB is interested in the installation of a wayfinding sign at the end of the Boundary Bay Dyke Trail at 17A Ave in Tsawwassen. The idea is to inform riders how to connect to key nearby destinations such as Centennial Beach (south), the Tsawwassen Ferry Terminal (west) and the Tsawwassen Town Centre (southwest).
- Key collaborators for the initiative could include Metro Vancouver, Delta, BC Ferries, the Tsawwassen BIA, and the Rotary Clubs of Tsawwassen/Ladner.



Sample Wayfinding approaches

→ Washroom stations along Boundary Bay Dyke Trail

- As Metro Vancouver has jurisdiction over both water supply and sewage – and is also encouraging regional trail experiences by residents and visitors – it was suggested that they invest in washroom facilities along trails such as the Boundary Bay Dyke Trail.
- Presently, there are washrooms at the trail beginning (at Mud Bay in Surrey); there are also park washrooms along 17A, a block away from the trail ending. This is a long distance for many users to travel, and may restrict participation by various users (including seniors and school-age children, among others).
- By contrast, the dyke trails in Richmond have incorporated rest stops with washrooms at various intervals along the dyke.

→ Trans Canada Trail

- Recent discussions with the Trans Canada Trail (TCT) group tie in very closely with these Metro Vancouver suggestions (re: washrooms, signage, and network connections).
- In addition to Delta HUB, the TCT team has been in contact with Delta, TFN and the Great Blue Heron Way working group about a trail connection to the BC Ferries' Tsawwassen terminal, via the Boundary Bay Dyke Trail. A trail system already exists to connect the TCT with the Horseshoe Bay ferry terminal.
- Through integrated planning and coordination, there may be a way to forge an identifiable, inclusive and highly-used trail system.

4. NEW ITEMS: New topics for discussion by Delta HUB members.

Opportunity: "Cycle highways" working group with HUB Cycling

- In connection with HUB's UnGap campaign (and leading up to the Provincial election) HUB Cycling is forming a "cycle highways" working group. The group will be comprised of Local Committee members who have locations identified in their communities for a cycle highway (i.e. contiguous trail, parallel to an existing highway).
- Delta HUB has had discussions with decision-makers already in conjunction with the Massey Tunnel Replacement Cycling Working Group, and the prospects for better network connections emanating from the bridge and interchange replacements
- **Action:** If any Delta HUB members are interested in getting involved with HUB's working group, contact Patrick (or email Andrew directly at andrew@bikehub.ca).

Opportunity: Summer outreach ideas

- Bill is one of the organizers of the Shriners' annual Salmon BBQ that takes place at Ladner Harbour Park (in June). He suggested that Delta HUB may wish to be involved.
- For the past two summers, Delta HUB have been invited to join the Delta Chamber's Visitor Booths at select events, which has been a great experience.
- In addition, early discussions have taken place with TransLink, in connection with their Southwest Area Transport Plan engagement that will be happening over the summer. There may be opportunities to collaborate on outreach, including Bike to Work Week.
- **Action:** We will discuss outreach ideas at the Delta HUB meeting in May. If any members are interested in taking part in summer outreach, please contact Patrick anytime.

Feedback: Mainroad Sweeping

- After recent meetings between HUB and the Ministry of Transportation (MoTI), MoTI is seeking cyclist input on hazard zones where highway sweeping can be improved.
- Debris on the SFPR has already been identified to MoTI, and we understand that some improvements to the SFPR concession may be forthcoming (due to repeat complaints). Unlike the other Mainroad concessions, the SFPR has been using a sweeper without a vacuum, resulting in debris along the edges.
- **Action:** Neil will share the request with SDR and BBCC riders. If any Delta HUB members or regional riders (i.e. from SDR, BBCC, Team Coastal) have specific feedback for MoTI/Mainroad, please provide suggestions to Patrick. We will provide these to HUB.

Feedback: Questions for candidates at upcoming All-Candidates Meetings

- There will be a series of All-Candidates meetings in Delta for the BC Provincial Election. These include: April 19th (Delta South, hosted by Delta Chamber of Commerce) and April 22nd (Delta North, hosted by Delta Residents Association).

- Anyone interested in submitting a question for the candidates may do so by email (*for April 19th: admin@deltachamber.ca; for April 22nd: delta.residents@gmail.com).
- Delta HUB members suggested that we submit a question on one issue – namely, whether candidates support the need for a pedestrian/cycling overpass at 52nd/Hwy 17. It was also suggested that we reinforce it with advocacy (i.e. letter to the Editor).
- **Update:** Delta HUB’s question regarding support for a ped./cyclist overpass at 52nd St was asked at the April 19th candidate meeting (NDP/Liberals: *Support*; Green: *Defers to Ministry*; Independent/BC Action: *Undecided*). In addition, the following letter from Carol appeared in the Delta Optimist: <http://www.delta-optimist.com/opinion/letters/overpass-would-connect-paths-1.15964934>).

Example: Two sample “suburban” cycling plans (Silicon Valley; Greater Toronto/Hamilton):

- <http://jointventure.org/images/stories/pdf/2017-02-bike-vision.pdf>
- <http://www.tcat.ca/knowledge-centre/active-transportation-planning-beyond-the-greenbelt/?platform=hootsuite>
- The plan for Silicon Valley contains several metrics (i.e. statistics about health, environmental, economic benefits of cycling) which would be helpful for Delta HUB in future advocacy efforts, including the proposed workshop with Mayor and Council.

5. WORKING GROUP UPDATES:

Safety/Routes

Update: March 7th Transportation Technical Committee meeting with Delta/MoTI

- An update document was prepared & distributed by Delta HUB in March, detailing the key topics discussed with Delta and the Province (including: debris clearance; signage; safety hazards; green caution paint; infrastructure)

Update: Hazards to cyclists during road construction

- Regarding road obstructions and hazards (such as temporary signs placed in bike lanes), Delta HUB was directed to MoTI’s Traffic Management Manual: http://www.th.gov.bc.ca/publications/eng_publications/tcm/traffic_control_manual.htm.
- The Manual identifies road contractor’s obligations to preserve cyclist safety, including section 4.2.8 (4) Sign Placement and Spacing:
 - o “Where cyclists and/or pedestrian may be present, signs should be placed to not interfere with their passage. When possible, a lateral clearance of 60 cm should be maintained between the edge of the sign and the travelled way.”
- **Action:** When there are concerns or hazards for cyclists during road construction, Delta HUB is encouraged to contact MoTI to enforce these critical safety requirements.

Update: Delta HUB Priority Item #14 (Westham Island Bridge)

- Delta Engineering followed-up with TransLink on our behalf about the urgent need for grid strips/safety treatment to Westham Island Bridge.
- TransLink reported that they will be looking for a short-term fix as part of some upcoming works on the bridge. This is a long-awaited fix, and we will report on progress.

Update: Delta HUB Priority Item #1 (Proposed green caution paint)

- It was noted that Delta Engineering would prefer to introduce green paint in a location where they have complete jurisdiction and, ideally, where other safety implementations could also be incorporated (i.e. elephant feet crossing, bike box, etc.)

- One option that Delta may be willing to explore is the corner of 12th Ave and Beach Grove Rd in Tsawwassen. This is a conflict location where cyclists traveling east along 12 Ave try to enter the Boundary Bay Regional Park (at the parking lot entrance, across from the Beach Grove Golf Clubhouse). Green paint at this location could raise awareness of cyclists, and guide them with a clear bike lane to make the crossing.

Local/Regional Infrastructure

Update: March 10th MoTI Transportation Priorities Meeting with MLA Scott Hamilton

- Delta HUB was invited to participate in a recent stakeholder meeting that MLA Scott Hamilton organized with MoTI. The focus of the meeting was 10-year transportation priorities. Other attendees included Delta's CAO and Director of Engineering, the Chief of Police, Delta Fire, Delta Chamber, Port of Vancouver and the Trucking Association.
- It was a productive session, and encouraging to see cycling interests included alongside motorists and trucks.
- MLA Hamilton identified safety and maintenance as an ongoing concern along Hwy 17.
- As a follow-up, it was suggested that Delta HUB investigate possible mitigations that might be appropriate along the s-curves of the SFPR, i.e. where cyclists may be most vulnerable. Ideas from Delta HUB members include:
 - o rumble strip on the corners (similar to what exists on Hwy 101)
 - o installation of white "delineator" poles, similar to the ones on the Hwy 17A overpass near the Town & Country.
 - o retrofitting the drainage grates, which are not flush, and protrude into the edge of cycling lane;
 - o more enforcement of speed limits/conduct of drivers.
- **Action:** Delta HUB to continue exploring safety ideas for the SFPR, and share these ideas with MoTI. Delta HUB should also become involved in the future review on Hwy 91/72nd St interchange to identify provisions for safe cycling, and linkages/policy relating to the Alex Fraser Bridge and Hwy 91 travel. Any members who travel in this area and/or would like in be involved in this infrastructure review should contact Patrick.

Update: Regarding Delta HUB Priority Item #18 (Metal cycle track on Hwy 17A step bridge).

- Delta HUB submitted a letter to Delta's Director of Engineering, requesting that the existing cycle tracks on either side of the step bridge be adapted. The current tracks are too right-justified for comfortable use by area cyclists (*letter attached*).

Education/Engagement

Request: Delta HUB "Cycling Rules" poster (Delta Police)

- Delta Police contacted Delta HUB to see whether the Spanish-language Cycling Rules poster we developed last year (for the local agricultural workers) could be available in Punjabi and Hindi languages.
- While it is not presently available in other languages, Patrick provided Delta Police with a copy of HUB's Cycling Handbook (which is available in Punjabi and 4 other languages): https://bikehub.ca/sites/default/files/imce/handbook_punjabi.pdf
- **Action:** Delta HUB and Delta Police to explore the possibility of translating/printing the poster in Punjabi or Hindi for area residents and workers.

Update: March 13th Bike Camp at Delta Gymnastics (Delta HUB/ICBC/Ladner CoPS)

- Delta HUB was invited to participate in a bike camp put on by Delta Gymnastics during spring break. Sandra attended, along with Tony Dales, who offered bike maintenance and safety tips. The Ladner CoPS also participated along with Karon from ICBC to engage about road safety. It was a successful collaboration, combining activity with education.

Update: May 6th Vancouver Bird Week ride – Wellington Park to Reifel Bird Sanctuary

- In conjunction with Vancouver Bird Week, HUB has been invited to lead a group of birders from Wellington Point Park to the Reifel Bird Sanctuary on Westham Island. The event will be from 10am to 1pm (*More information about the event can be found online at <http://www.vancouverbirdweek.ca/session/vancouver-bird-week-biking-with-the-birds-ride-ladner/>).
- **Action:** HUB continues to look for ONE more volunteer to help guide the riders. If you are interested in participating, please contact Patrick (or email Cathy at cathy@bikehub.ca).

Update: Community donation items purchased with Delta HUB budget (Bike lights)

- With the remaining funds in our annual budget, we were able to purchase ~100 bike lights (60 red; 40 white). These will be used in our local outreach, and will complement the bike bells that the committee purchased in 2016 for community donations.

Update: PLAY Delta Working Group

- Melanie has been attending the PLAY Delta working group, along with other volunteer and organizational representatives from sport, education and health. The group is currently developing its Mission Statement and planning next steps.

Update: North Delta outreach

- A column about Delta HUB has been drafted for the North Delta Reporter, and will soon be submitted to the Editor for consideration.
- In addition, Patrick has been in contact with Randy Mann from the North Delta Community Corner Facebook group. The forum has a video feature for community groups called “What’s Up Wednesdays”. There are plans to feature Delta HUB in an upcoming video segment (likely towards the end of April).

6. OTHER ITEMS:

Upcoming: TransLink SouthWest Area Transport Plan (April 13th Committee meeting)

- Two members of Delta HUB are on TransLink’s advisory committee (Anton is the Chair).
- **Action:** Anton will report about the upcoming SWATP engagement and service improvements at the May 4th Delta HUB meeting.

***Next Delta HUB meeting:** Thursday, May 4th, 2017 at 7pm (Venue: TBA)