

# MINUTES - Delta HUB Committee Meeting

Thursday Dec. 1st, 2016, 7:00pm

- 1. INTRODUCTIONS:** Patrick (Chair), Ross, Hillary, Karon, Roel, Tony, Neil, Dan, Melanie, Sandra, Anton, John

Melanie began the free Tuesday Women's Ride, which introduces local women to cycling, etiquette, and safety (<https://www.facebook.com/groups/BBCCLadies>); the group resumes riding in the spring. Dan is the Chair of the Langley HUB Committee.

- 2. MINUTES:** Minutes approved from last meeting (Nov. 3rd)

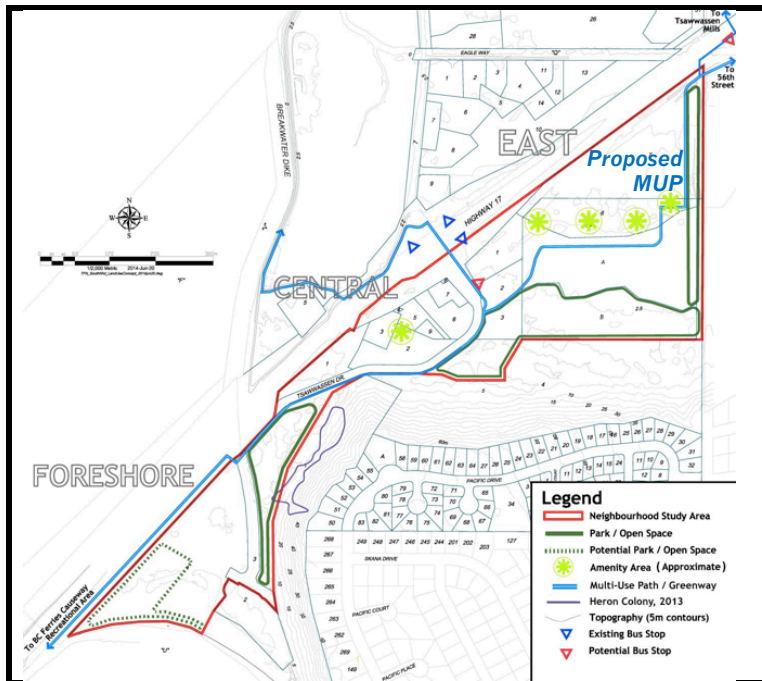
- 3. GUEST:** Ross Clouston, Project Manager at Tsawwassen Springs

- Ross provided an overview of the future multi-use path (MUP) at Tsawwassen Springs.

- This future trail – which will connect Tsawwassen to Tsawwassen First Nation – has the potential to serve as an important recreational path for local and regional cyclists, and a safer alternative to the on-road route along Hwy 17.
- The proposed MUP will allow cyclists to travel east-west – between 52 St/Spyglass and the TFN waterfront (and beyond to the Tsawwassen ferry terminal). It will be realized gradually over the next 2-3 years.



- Springs Blvd. is private road, running from 52 St west to the TFN boundary. The plan is to gradually build-out the Tsawwassen Springs community east-west, and finish the public realm with pavers and asphalt. There will be restricted parking on Springs Blvd, to provide room for the MUP and enhance safety through improved sight lines.
- Ross will confirm the proposed dimensions for the new MUP from engineered drawings (it is believed that the path will be 3m wide, for both cyclists and walkers); Delta HUB can be contacted as project elements move forward.
- Tsawwassen Springs constructed the existing MUP along 52 St as part of the original phase of development (connecting Hwy 17 to Springs Blvd, north-south). They chose to make it gravel to mitigate the impact of any golf balls hitting the surface.
- An adjoining MUP now exists north of Hwy 17 (along the TFN shopping precinct), from Hwy 17 north to Fisherman's Way.
- The Tsawwassen Springs project team and its contractors continue to use the construction access road (connecting the site to Hwy 17). They have an agreement with the Corporation of Delta to keep construction traffic to the west. For safety reasons the project team is discouraging cyclists from using the construction access road. It is active at least 6 days per week, with large construction vehicles and a truck wash.



- Tsawwassen Springs has a Right-of-Way agreement with TFN to access the proposed MUP/ Greenway on adjoining TFN lands (\*shown in blue, from page 22 of the South Neighbourhood Plan).
- The proposed MUP will run through the South Neighbourhood area – from Tsawwassen Springs through to Tsawwassen Drive and beyond to the BC Ferries Causeway.

- **Action:** Invite TFN Director of Planning to a future Delta HUB meeting for a discussion about proposed trail connection through South Neighbourhood area (including any connections to the new north-south corridor, Salish Sea Drive, from Hwy 17 to 27B).

#### 4. NEW ITEMS: New topics for discussion by Delta HUB members

##### Tourism Delta

- Tourism Delta is updating their Delta Activities Map. In October they asked Delta HUB to provide any feedback on preferred routes for locals and visitors..
- So far, suggestions include the removal of Hwy 17/SFPR from the Activities Map (despite the shoulders on the SFPR – and its characterization as a regional cycling facility – it is not considered a safe route for visitors due to truck traffic).
- It was suggested that the draft Activities Map also be provided to Delta Police (Sgt. Sukh Sidhu, Vulnerable Sector) for any input on the map.

**Action:** Sandra will collect comments for the Activities Map and share with Tourism Delta. Patrick will connect with Delta Police for any additional feedback.

##### Safety Concerns - Hwy 17/52 St Intersection

- There continue to be safety concerns for cyclists and pedestrians at Hwy 17 and 52 St.
- An accident recently occurred involving a vehicle crashing into a pole near the traffic island, where pedestrians and cyclists are advised to cross.
- While no one was seriously hurt, it serves as a reminder of the need to heighten safety levels at that intersection (including an overpass and mitigations such as green paint).
- It was suggested that reducing the speed limit on this section of Hwy 17 could also serve to enhance the safety of the various users who may be in conflict.

##### Donation idea from Ladner resident (Reflector Strips for Farm Workers)

- Delta HUB received an email from a Ladner resident via ICBC, who is reaching out for possible donations of reflector strips. She has witnessed many farm workers cycling in the dark without adequate visibility, and would like to distribute donated reflector bands.
- It was suggested that large organizations be contacted as well for potential donations (i.e. Century Group, Translink, MEC, etc).
- **Action:** Anyone with reflector strips to donate, or ideas for further collection/donation, please connect with Patrick at [delta@bikehub.ca](mailto:delta@bikehub.ca).

### Delta “Active for Life” Group

- Melanie attended the Nov. 30 “Active for Life” meeting (to be called “PLay Delta”).
- The group connects various organizations invested in maintaining active lives of youth and adults in Delta (including the School District, health specialists, and sport councils).
- The group appreciated Delta HUB’s involvement to represent cycling transportation, education and promotion. Next steps include narrowing the mandate and action plans.

### Cycling Tips for Newcomers

- HUB Cycling has developed a Multi-lingual Tip Sheet for newcomers who may not be aware of the local cycling rules and practices.
- The tip sheet and Guide can be found at <https://bikehub.ca/helpful-information-about-cycling-in-metro-vancouver#newcomers-guide-to-cycling>. The guide is available electronically, and in in paper, in English, Chinese, Tagalog, Korean, and Punjabi.
- Anyone looking for more information can contact Ellie at HUB ([ellie@bikehub.ca](mailto:ellie@bikehub.ca)).

### HUB “UnGap the Map” workshop

- Roel participated in the Nov. 30th Workshop for HUB Cycling’s Ungap The Map project. HUB received funding to focus on this regional connectivity initiative, and hired a Coordinator (Andrew Picard) to help guide next steps (including mapping/advocacy).
- Roel worked with Surrey HUB to identify Surrey-North Delta gaps (including sections/conditions along Nordel Way).
- HUB is completing a regional "Success map", and would like Delta HUB to help identify local improvements.
- **Action:** Delta HUB to review Spot Improvement List and highlight road/infrastructure improvements for HUB’s Success map.

### Boundary Bay Road, Tsawwassen

- It was reported that a new bus pad was being poured along Boundary Bay Road, next to the entrance to Boundary Bay Regional Park/Centennial Beach.
- It is a concrete bus bay with a curb to pick up passengers by pulling over to the right. The curb is scooped for wheel chair access, and the bike lane will cross over the pad.
- From discussions with Delta Engineering, the bike lanes on both sides of the road will be improved from 3rd to 12th Avenue (as part of the Southlands project). The narrow sections of the bike lane will be widened and bike symbols to be painted along the lane.
- Patches to improve the current condition of the road is scheduled for next week (weather permitting); the bike lanes will be repaved later in the spring.

### HUB Membership

- It was suggested that Delta HUB highlight the opportunity, and benefits, of purchasing an annual membership with HUB Cycling (several Delta HUB members already belong).
- HUB Cycling is the non-profit parent of Delta HUB and all the Local Committees in the Lower Mainland. In addition to supporting the committees, HUB is very involved in cycling education and advocacy. Information about the membership can be found at <https://bikehub.ca/get-involved/member-benefits>. Benefits include discounts for bike racks, anti-theft gear, car sharing, food/fashion, travel, and items at select bike shops.

## **5. WORKING GROUP UPDATES:**

### **Safety/Routes**

#### Delta HUB "Cycling Priority List"

- After collecting input from Delta HUB members, the Priority List was compiled and submitted to Delta Engineering on Nov. 22 (in advance of the 2017 Capital Plan Review, which is taking place on Dec. 10).

- The Priority List was also provided to Delta's Planning and Parks & Recreation departments, to align our cycling priorities with any departmental projects or plans.
- The Priority List is a living document, and will added to and refined.
- As a next step, it was suggested that Delta HUB:
  - o connect with Delta Engineering to learn more about the timeframe for capital projects (2017, 2018), and which of Delta HUB's priority items align.
  - o provide the Priority List to HUB's Regional Advisory Committee to be included in the "UnGap The Map" initiative which is underway.
  - o prepare a letter to the Corporation of Delta/Delta Engineering to highlight the recent Metro Vancouver approval of TransLink's 10-year investment plan. The letter would encourage Delta to leverage the Plan's cycling infrastructure component (and invest in cost-shared cycling facilities). This could be a constructive way to see Delta receiving a higher share of the regional TransLink funding. Delta HUB could serve as a resource, by helping to identify key projects for future cost-sharing applications.
- **Action:** Patrick to connect with Delta Engineering re: municipal priorities/process. Patrick will share the Priority List with Ellie at HUB for the RAC committee (and with Melanie/Neil for distribution to Team Coastal, BBCC and South Delta Riders). Roel will liaise with the RAC to include Delta HUB's identified priorities in future updates of the UnGap the Map spreadsheet and map.

#### Draft Wayfinding (Signage) Report

- Anton prepared a draft of Delta HUB's Wayfinding/Signage Report. It is intended to highlight the importance of signage in key locations – to dually inform and raise awareness about cycling routes and safety.
- The draft Report includes discussion about: Why wayfinding is important; Current context in Delta; What's working here; What's working in other municipalities; and Key opportunities/recommendations. It also includes some signage "mock-ups", using the new Translink Guidelines for Wayfinding.
- Due to the cost and other factors, most municipalities take a gradual approach to updating signage. Both Langley and Richmond noted a need for consistency in signage.
- **Action:** The draft Wayfinding Report will be shared with the Safety/Routes sub-committee for feedback; once finalized, it will be shared with Delta Engineering/MoTI.

### **Local/Regional Infrastructure**

#### George Massey Replacement Project (GMTR)

- Delta HUB provided a completed "Scoring Sheet" to the GMTR Cycling Working Group (using HUB Cycling's template). The Scoring Sheet highlights key connecting routes to the new bridge post-construction, and evaluates the routes based on key criteria (including: destinations, directness, connectivity to local bike routes; ridership served; safety; and technical and political feasibility).
- The main routes identified by Delta HUB included: 64 St/ Burns Drive; Hwy 17A; Ladner Trunk Rd; Burns Drive to Hwy 91; River Rd-Elliott-Arthur Drive; River Rd-Crescent-57th-Ladner Trunk-Harvest Drive; 64 St-Boundary Bay dike; 60th-68 St-River Road/Tilbury.
- The routes and evaluation will be used by the Cycling Working Group (which includes representatives from Delta, Richmond, TransLink and MoTI) to ensure that key corridor connections are planned for (and potentially funded).
- In connection with the EA for the GMTR, Delta HUB received a letter from the Ministry of Environment responding to the committee's earlier submission. They highlighted that a Construction Management Plan will be in place (to mitigate safety/noise concerns while the bridge is being built); in addition, they indicated that there may be some temporary restrictions on Millennium Trail (which will be relayed as soon as plans are known).

## Education/Engagement

### Interview with Delta Optimist (Delta HUB and Delta Police)

- Delta HUB was featured in a bike safety article with the Delta Police in the Delta Optimist on Nov. 11: <http://www.delta-optimist.com/news/making-a-safe-cycling-community-1.2632612>

### Delta HUB presentation to Delta School District, Green Committee (Nov. 29)

- Patrick and Sandra presented to the School District's Green Committee (which includes facilities staff, Assistant Superintendent, District Vice-Principal, and other administrators).
- The Green Committee discussed how different schools tend to have differing profiles for cycling (due to location and parental preferences, some have many cyclists; others few).
- Delta HUB asked that "active transportation" be included in the School District's policies; also, that specific schools be identified that could benefit most from bike education.
- The idea of a Bike to School Week event at one or more schools was also discussed (B2SW happens during the same week as Bike to Work Week: May 29-June 4 2017). As safety is key, the SD would want to make sure that the conditions at any participating schools are appropriate (safe) for cycling.
- We learned that the Corporation of Delta has "Safe Routes to School" maps for each school (though these do not appear to be well-understood, or utilized); there was a suggestion to rename them "Best Routes to School" since safety is relative and varies.
- The Green Committee suggested that Delta HUB consider approaching the SD's Health Committee as well as the PACs (in particular, the DPAC for the whole of Delta).
- Dan referred Delta HUB to a study done by Trinity Western University in Langley. The study revealed that the biggest concern is safety (parents don't feel safe having their kids ride to school; some abduction concerns noted as well).
- **Action:** Delta HUB to connect with Delta Engineering about the status of the Safe Routes to School maps; also, Delta HUB to contact the DPAC for Delta to learn about schools that might be suitable for Bike to School Week or bike education courses. Dan to provide Delta HUB with a copy of the TWU cycling study.

## 6. OTHER ITEMS:

### TransLink Southwest Area Transport Plan PAC Meeting (Nov. 22).

- Anton reported on the most recent meeting of the SWATP Public Advisory Committee. The SWATP is gearing up for another engagement effort with people who live, work or travel through South Delta, Richmond, or TFN. This will involve sharing the results from the Spring 2016 engagement, including a mapping of issues & opportunities.
- To have greatest impact, TransLink benefits from the input of a range of demographics and users (including drivers); all suggestions for stakeholder contacts are welcome.
- **Action:** Anyone with specific engagement ideas (or points of contact) for future SWATP outreach efforts are asked to contact Anton or Patrick.

### FVRL Teen Volunteer Fair (January/February)

- As a community partner with FVRL, Delta HUB has been invited to participate in the upcoming FVRL Teen Volunteer Fair. The Fair happens annually, and is intended to help connect teens with volunteer opportunities to complete their 30 hours of service.
- The sessions will be: 3:00-5:30pm on Jan. 25 (North Delta) and Feb. 8 (Ladner).
- **Action:** Any Delta HUB member interested in participating, please contact Patrick.

### Delta Community Foundation – Grant Application (for bike maintenance classes)

- HUB recently submitted a grant application to the Delta Community Foundation. The proposal, if funded, would involve a bike maintenance course at each of Delta's libraries.

**\*Next Delta HUB meeting:** Thursday, Jan. 5th, 2017 (7pm at Ladner Pioneer Library)